

A man in a high-visibility vest is kneeling in a field of sunflowers, holding a measuring pole. The background shows a blurred industrial structure, likely a mine. The scene is brightly lit, suggesting a sunny day.

RECLAMATION

We help you plan, assess, design, construct and manage your mine reclamation and closure project.




CLOSURE PLANING

Any professional mine closure starts with early conceptual closure plans prior to production, periodic updates throughout the mine life cycle and a final decommissioning plan. Due to RWE's own responsibility as one of the biggest opencast-mine operators worldwide, we know exactly when, how and at what risks and costs to prepare for mine reclamation. This makes us the partner of choice for many clients facing mine closure projects.



NATURE & NEIGHBOURS

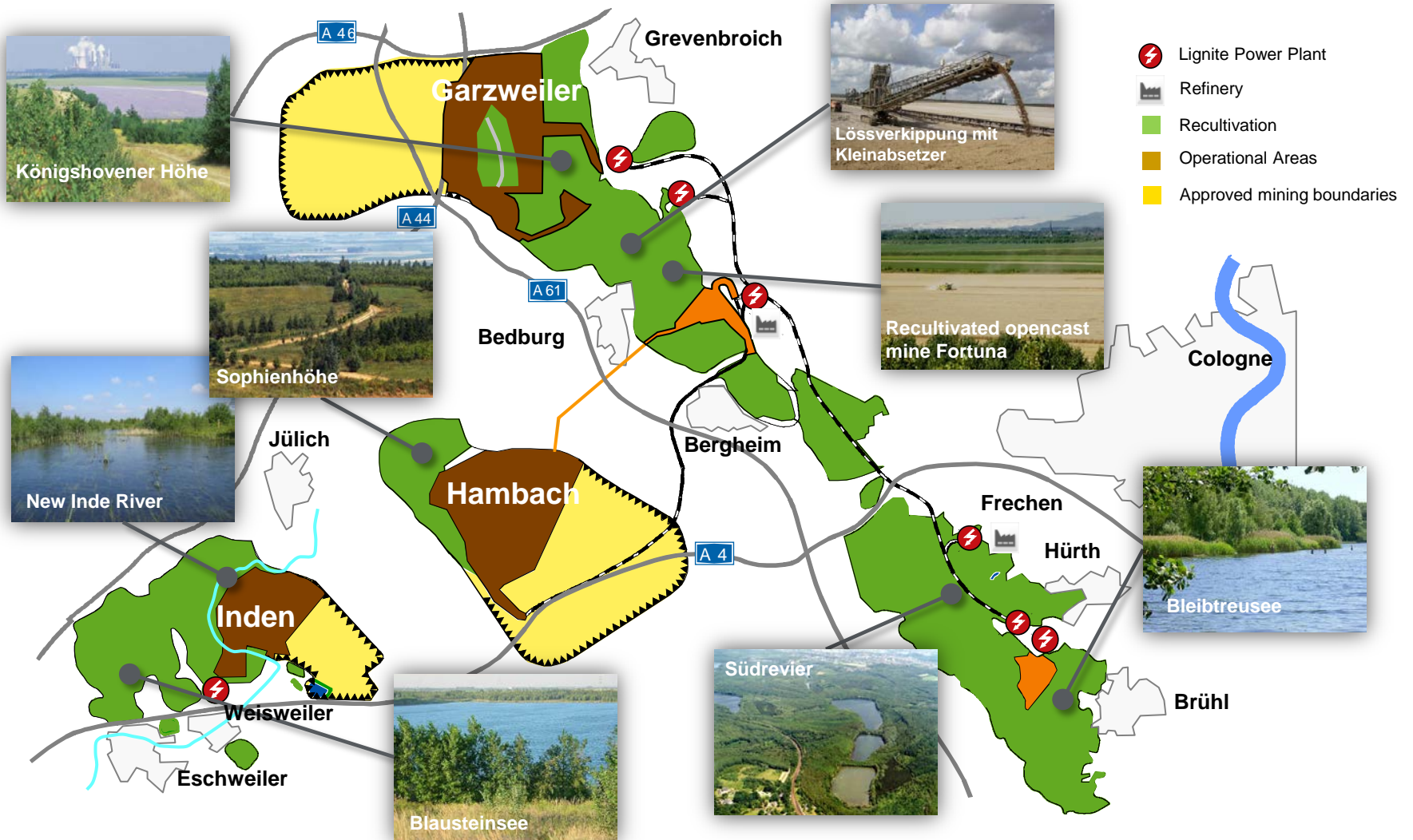
Responsibly closing and reclaiming mine sites starts with engaging stakeholders – even before mining starts. This is important for us and to our employees because it is the right thing to do. Our employees live, work and raise their families near the places where we operate. They are passionate about ensuring habitat, wildlife and landscapes are restored for future generations. Therefore we inform, engage and involve governments, communities and local people in closure and end land use planning before any activity begins



START-UP NATURE

Recultivation is not an attempt to re-build Nature. We can only provide start-up aid. Most of the work is done by Nature itself. Rhenish recultivation is considered exemplary among specialists worldwide. With over 100 years of operating experience we learned that the ecosystem and biodiversity of the mining area and its broader surroundings – will be in better overall condition than before with careful and early planning, progressive reclamation and post-closure activities.

Overview RWE mine reclamation areas



Key figures – Rhenish area

Status: 31.12.2016

Recultivated post-mining area

Total area	22,380 ha
Including Farmland	12,260 ha
Forest	8,367 ha
Water bodies and others	1,753 ha



RWE consults clients in mine closure planning, reclamation & post-mining activities

- > **Expertise:** Over our 100-year history, we have learned that responsible mining and mineral development are fundamental to our long-term success.
- > **Closure:** Our expertise spans the entire process of planning and carrying out responsible mine closure throughout the mining life cycle.
- > **Reclamation:** In our own recultivation research centre we successfully planned and executed recultivation activities together with agriculture, forestry and biodiversity specialists.
- > **Monitoring:** We continually monitor post-mining land use objectives achieved and evaluate success of rehabilitation measures



Our Key Services

- > Scoping / Feasibility studies
- > Assessment of closure requirements and remediation objectives
- > Preparation and review of closure and post-closure reclamation and restoration plans
- > Plans and systems to manage biophysical and social risks, impacts, and benefits
- > Monitoring studies across the mine life cycle
- > Environmental / Social impact assessments
- > Assistance with public consultations and engagements
- > Implementation of mine closure and remediation programs
- > Evaluation of mine closure, remediation and long-term maintenance costs
- > Generation of long-term stewardship models



WE ARE RWE

WE ENABLE AND SHAPE CHANGE!